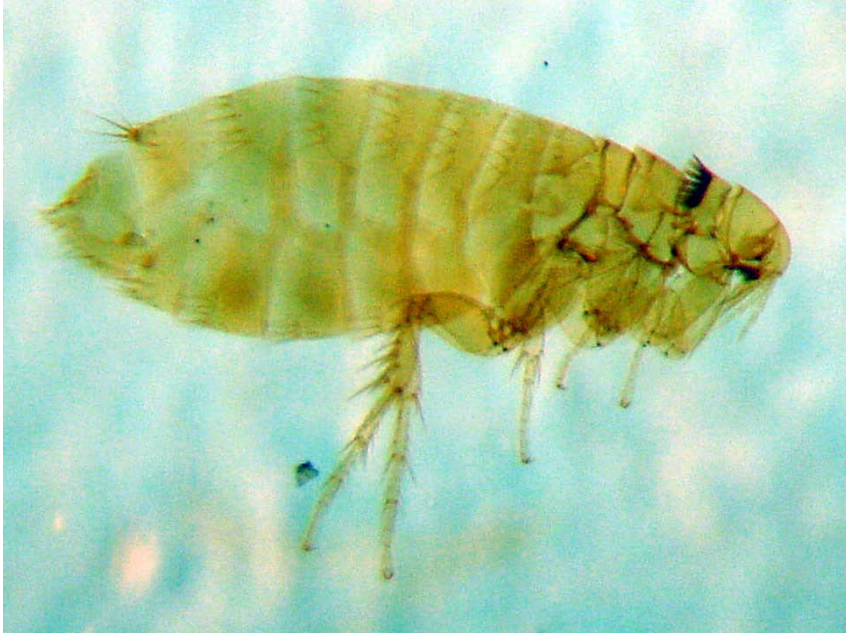
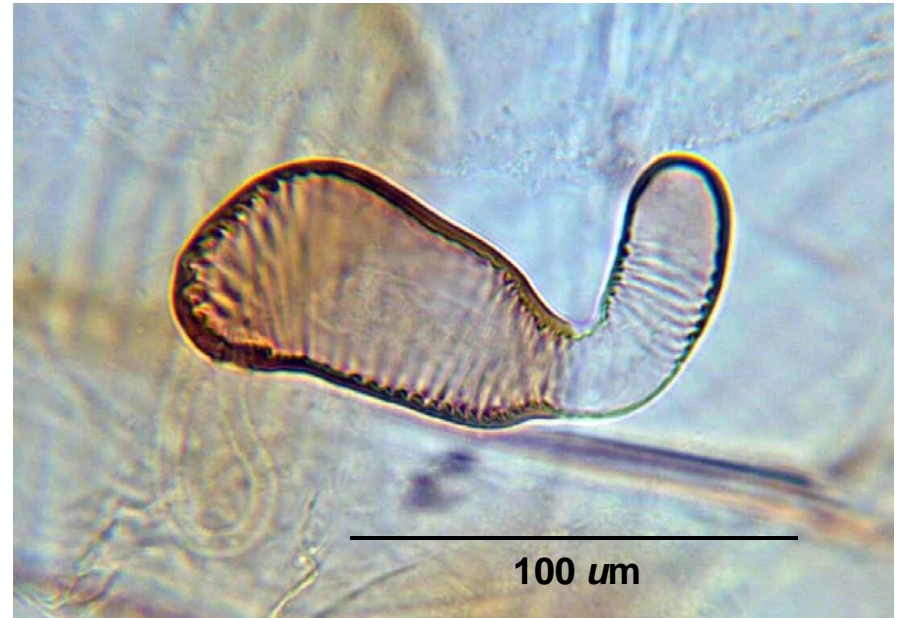


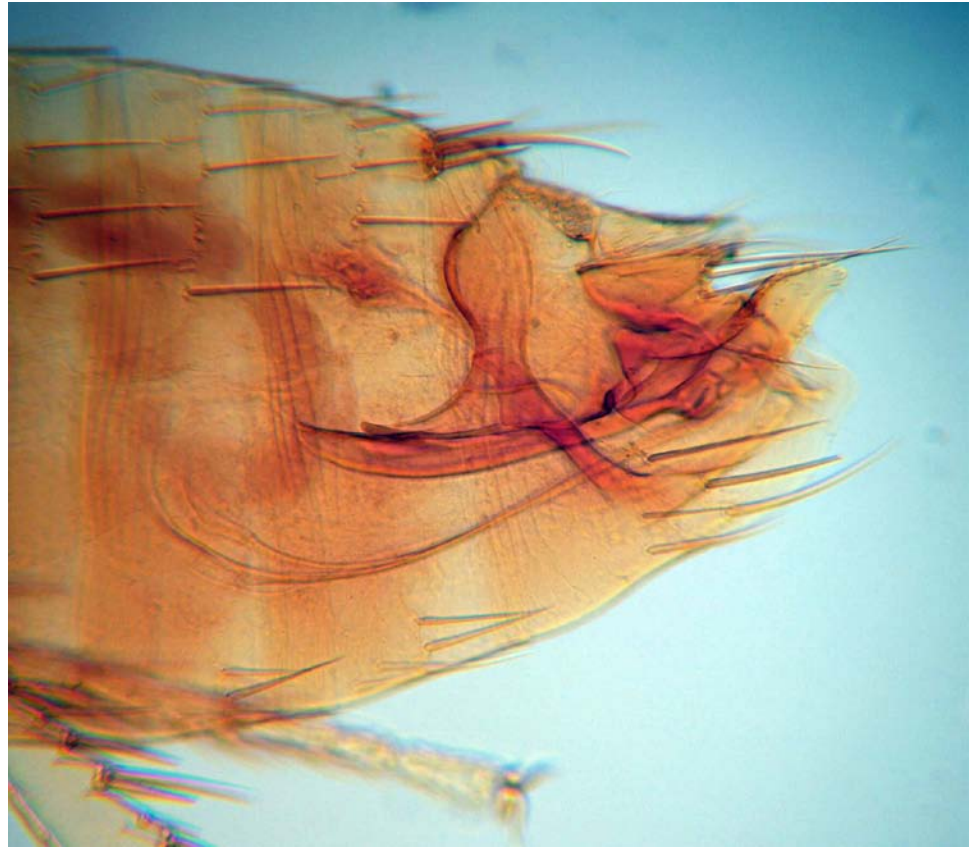
Ctenophthalmus pseudagyrtes: relative sizes, female (left) male (right).



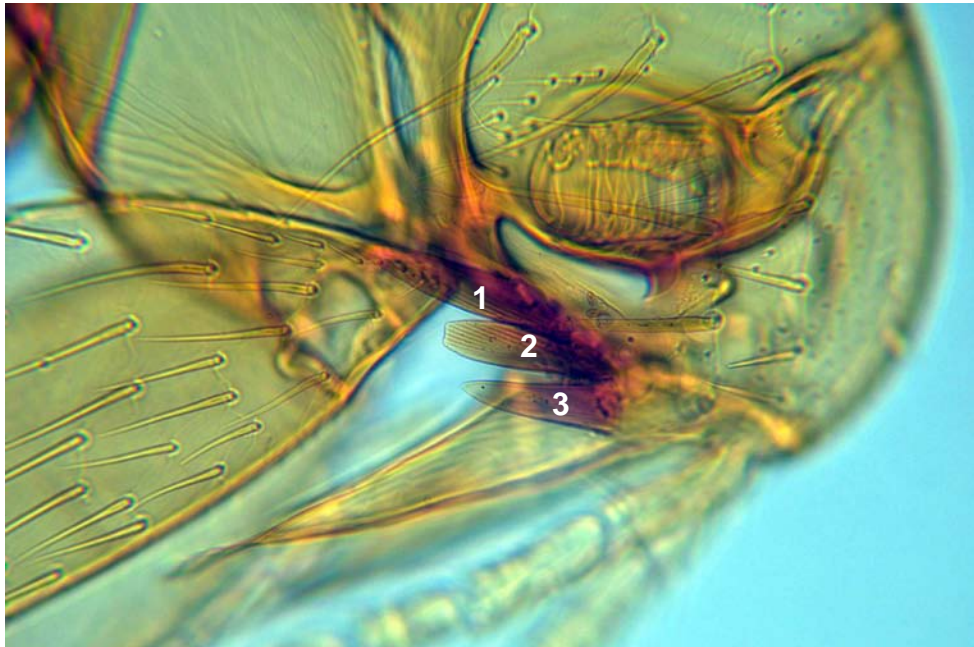
Ctenophthalmus pseudagyrtes,
female, spermatheca.



Ctenophthalmus pseudagyrtes: male head (left), genitalia (right).



Ctenophthalmus pseudagyrtes. Note: (A) eyes vestigial, 3 teeth in genal ctenedium; and (B) characteristic spines near front of head (solid arrows) and small spines above antennal groove (dashed arrow).



Ctenophthalmus pseudagyrtes,
posterior of female with fossa (f),
sensilium (s), and trachea (t).

